

ANNEX S
ANIMALS

I. PURPOSE

The purpose of this plan is to outline our concept of operations in coordinating the effective use of public and private partnerships for the care and proper disposition of companion animals, livestock, and wildlife following a natural or technological disaster. This will include coordinating with governmental authorities in matters of animal rescue, evacuation, use of equipment, provision of transportation and security, destroying sick or diseased animals, as well as facilitating a system for companion animal/owner reunification.

II. SITUATION AND ASSUMPTIONS

Situation

In the event of a major disaster in our area, it is likely that the number of animals coming to Tri-County Humane Society (and other facilities) will increase. That increase may come from:

1. Abandoned animals – families fleeing without their pets
2. Lost animals – displaced by storms, fires, etc.
3. Rescued animals – whose families are unable to take them in after rescue
4. Family pets whose families cannot keep them for a short time due to the events
5. Pets who are being permanently surrendered
6. Emergency sheltering related to other animal care site evacuations and/or overflow of shelter care facilities

In a major disaster, livestock and wildlife are likely to be injured or dead, or need special attention. These conditions may exist because:

1. An accidental release of radiation or a hazardous material/chemical incident
2. Several highly contagious diseases may attack livestock or wildlife
3. Natural disasters
4. Power failures impacting confined animals such as poultry and swine

Assumptions

Recent national disasters have reflected the human-animal bond that affects large segments of the human populations and their behaviors in disasters.

1. People with companion animals frequently will choose not to evacuate rather than leave animals behind
2. People will try to re-enter an area to retrieve animals left behind, putting themselves as well as emergency personnel at risk
3. People will live in their cars or stay on the streets rather than abandon animals in order to stay in an evacuation shelters
4. Animal Population Estimates – U.S. Pet Ownership and Demographics Sourcebook

Companion Animals: Number of households X .589 = # of households with pets
Dogs: Number of households X .534 = # of households with dogs
Cats: Number of households X .598 = # of households with cats
Birds: Number of households X .126 = # of households with birds

Therefore, it is essential that Stearns County/City of St. Cloud and Tri-County Humane Society, as lead agency for companion animal care, develop policies and procedures for responding to and managing small and mid-sized events that could become disasters.

According to the United States Department of Agriculture during the 2002 Census of Agriculture, Stearns County had 3, 152 farms, with an average size of 216 acres. The United States Department of Agriculture also reported in 2006-2007 the following numbers for Stearns County: Sheep – 2,200, Cattle – 190,000 and Hogs and Pigs – 111,000 and for poultry production 3.8 million layers and broilers.

When livestock is diseased or dead as a result of a disaster, there may be a massive response from multiple levels of government that require close coordination. Some assumptions are:

1. Livestock will need to be sheltered and fed in place during a release of radiological materials
2. Livestock will need to be quarantined during a release of radiological materials or a highly contagious disease outbreak
3. In the event of an evacuation, livestock may temporarily be sheltered at the Stearns County Fairgrounds, or possibly at abandoned feedlots
4. The State of Minnesota will provide identification of highly contagious diseases
5. Bio-security will need to be established to prevent the movement of animals and cross-contamination from personnel and equipment
6. Depopulation of livestock and wildlife may need to occur in order to eliminate the diseased or injured animals

7. Minnesota Pollution Control Agency, Department of Agriculture, and the Board of Animal Health will determine the best manner of depopulating and disposing of livestock and wildlife

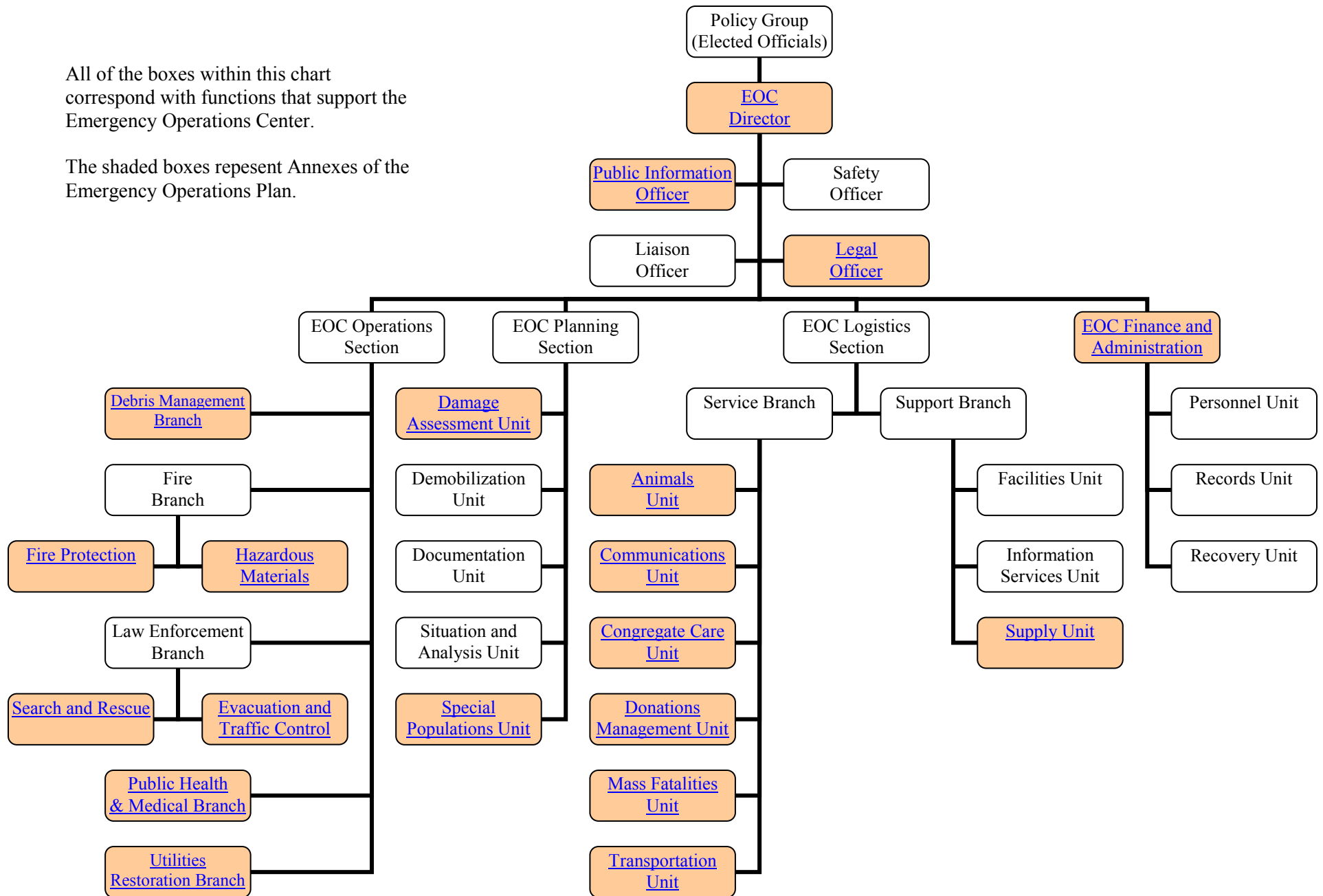
Potential methods for disposal may include: composting, air curtain incineration, uncontrolled open burning, rendering, on-site burial and permitted lined landfill.
8. Stearns County has a high water table that hinders the burial of animals
9. Destroying and disposing of animals presents a concern over contamination of soils and waters
10. Loss of domestic animals may have major financial impacts on Stearns County/City of St. Cloud producers

III. CONCEPT OF OPERATIONS

Stearns County and the City of St. Cloud utilize the National Incident Management System (NIMS) when managing all disasters. The Emergency Operations Plan has been designed based on the NIMS model utilizing the Incident Command System. The Command Staff includes a Legal Officer, Public Information Officer, Liaison Officer, and Safety Officer. The General Staff includes the Operations Section Chief, Planning Section Chief, Logistics Section Chief, and Finance and Administration Section Chief. The Command and General Staff all report to the Emergency Operations Center Director. The Emergency Operations Center Director is the Stearns County/City of St. Cloud Emergency Management Director. In addition to the Command and General Staff positions there are Branch Directors and Unit Leaders that represent the 21 annexes of this emergency operations plan. Branch Directors and Unit Leaders report to Section Chiefs, as outlined in the flowchart below:

All of the boxes within this chart correspond with functions that support the Emergency Operations Center.

The shaded boxes represent Annexes of the Emergency Operations Plan.



IV. RESPONSIBILITIES

Stearns County/St. Cloud Emergency Management Director

The Stearns County Emergency Management Director (or designee) is responsible for carrying out the emergency management program for the City of St. Cloud and Stearns County. The Emergency Management Director (or designee) will activate the Emergency Operations Center as required or requested to coordinate/support the activities of all departments/organizations assisting with response and recovery efforts. The Emergency Management Director (or designee) will establish response and recovery priorities through the Emergency Operations Center and will coordinate the resources to support emergency operations.

Animal Unit Leader

The [Animal Unit Leader](#) (Tri-County Humane Society Director and/or Stearns County Environmental Services Director [or designee]) is responsible for the overall coordination of services regarding animal rescue, evacuation, use of equipment, provisions for transportation and security, destroying of sick and diseased animals, as well as facilitating a system for companion animal/owner reunification. The Animal Unit Leader is responsible for coordinating efforts that apply to companion animals, livestock, poultry, and wildlife. The Unit Leader will work with support agencies and animal organizations to coordinate response efforts as well as donations of animal supplies and equipment, in cooperation with the [Donations Management Unit Leader](#). Other coordination will be required surrounding the transportation and disposal of carcasses and the coordination or quarantines for diseased poultry and livestock.

Local Animal Authority

The local animal authority will assist with rescue operations within the impacted jurisdiction. This coordination will include development and deployment of animal rescue teams as well as arranging for transportation of rescued animals to shelter areas. The local animal authority will assist the Tri-County Humane Society with the sheltering and care of displaced, rescued, or sheltered animals. Prior to a disaster the local animal authority will work with the Tri-County Humane Society to develop a training program and protocol for animal rescue teams.

Tri-County Humane Society

The Tri-County Humane Society will develop and maintain a current list of animal care facilities, food supplies, cage supplies, and hotels/motels willing to accept pets. They will also develop a list of volunteers willing to assist in setting up and maintaining an emergency animal shelter and identify those people who are willing to accept animals into their homes for the duration of the disaster, and/or transport them to temporary shelters.

Stearns County Environmental Services

Stearns County Environmental Services will assist with services for animals, especially livestock, when preparing for, responding to and recovering from disasters. Some of these services include providing preparedness education and training to producers, maintaining current databases of information such as agricultural property owners, feedlot operators, farms, and agricultural businesses. Environmental Services will be the lead local agency for livestock and wildlife concerns as they relate to the disaster incident. Some of the responsibilities may include locating emergency shelters, arranging for food and other emergency supplies, coordinating transportation resources for dead animals, both from natural causes as well as disease, and coordinating with large agricultural businesses such as Goldn' Plump and Jenny-O that may have been impacted by the incident. In addition to these activities Environmental

Services also responds, when notified, to hazardous materials spills throughout the County to complete an assessment in cooperation with the Minnesota Pollution Control Agency.

Minnesota Animal Disaster Coalition

The Minnesota Animal Disaster Coalition provides assistance in preparedness activities including animal guideline development, exercises, and improvement efforts, at the local and state levels. They also can assist with efforts to identify facilities, locate resources, and recruit personnel that may be able to provide assistance working with animals during a disaster. The Minnesota Animal Disaster Coalition will also participate in training and exercises that build capacity to respond to animal-related emergencies. Some of the emergency response functions provided by the Minnesota Animal Disaster Coalition include gathering information on the status of animals during a disaster, assisting with screening, decontamination, sheltering and care of animals impacted by the disaster. The Coalition will also advise and assist the State Animal Coordinator, as required, in the development of strategies to deal with issues that arise during disaster situation that involve animals.

American Red Cross

The American Red Cross will utilize a resource list for animal welfare, boarding sites, and/or local veterinarians to provide information or referrals to pet owners who contact the Red Cross for assistance. Shelter residents/disaster victims, who may need temporary care for their pets while staying at shelters, will have referral information provided to them. The Red Cross shelter information/intake desk will provide pet sheltering information and assistance with making food available to animal shelter workers through on-going mass feeding efforts that are supporting human shelters. They will coordinate with the Tri-County Humane Society, animal control and the EOC in disseminating information to the media regarding the availability and location of emergency animal sheltering. The Red Cross will offer pet first aid courses to the community to support preparedness of pet owners to care for their animals in emergencies and to augment training of potential volunteers.

Additional Responsibilities and Support

1. Resources

Local resources are described in the Resource Manual.

2. Maintenance and Records/Contracts

The Stearns County/City of St. Cloud Emergency Operations Plan, including the Basic Plan and Annexes, is updated on an annual basis. Each annex representative is responsible for participating in the full review process every other year and for independently reviewing the annex on an annual basis. The overall responsibility for revising the Emergency Operations Plan is that of the Stearns County Emergency Management department.

Records will be maintained on the use of all equipment, whether owned, leased, rented or borrowed. These records/contracts will be used as basis for possible recovery of emergency operations expenses from a responsible party or reimbursement of certain expenses by State or Federal government. All records/contracts generated by the Animals Unit Leader (or staff) should be retained, until the Finance and Administration Section Chief makes a final decision regarding claims for cost recovery or reimbursement.

3. Preservation of Records

All vital records produced or obtained by the Animal Unit Leader should be protected from the effects of disasters to the maximum extent feasible. Should records be damaged during an emergency situation, professional assistance in preserving and restoring those records should be obtained as soon as possible.

4. Training & Exercises

- a. Personnel who will staff the EOC shall receive appropriate training on the operation of the facility, which should be arranged by the Animal Unit Leader.
- b. Emergency exercises should periodically include a scenario that provides for the demonstration of animal services.

5. External Support

- a. Summaries of inter-local agreements and agreements with other governmental entities, volunteer groups and businesses for resource support, as well as contingency contracts with commercial transportation providers are listed in the Resource Manual. Activation of such agreements and contracts will normally be coordinated through the EOC.

V. REFERENCES

- Local animal resources are described in the Resource Manual
- Contact Information for support organizations can be found on file in the Emergency Operations Center
- Board of Animal Health Highly Infectious Disease Plan, Minnesota Pollution Control Agency Plan, and Minnesota Department of Agriculture Plan
- Hotels/Motels accepting companion animals are described in the Resource Manual
- Tri-County Humane Society Internal Disaster Plan (on file at TCHS and in the Emergency Operations Center)
- Jennie-O and Gold-n-Plump have Emergency Operations Plans
- Auxiliary communication sources i.e. amateur radio operators (See [Communications Annex](#))
- Auxiliary power supply resources are described in the Resource Manual
- Excavating Companies and Trucking Companies can be found in the Resource Manual
- Infectious Disease Outbreak, Man-Made or Natural Disaster Requiring Major Carcass Disposal (on file in the Emergency Operations Center)
- Minnesota Highly Contagious Animal Disease Response Plan (on file in the Emergency Operations Center)

VI. AUTHENTICATION

Vicki Davis, Director
Tri-County Humane Society

Date

Donald W. Adams, Director
Stearns County Environmental Services

Date

VII. ATTACHMENTS (**All attachments have been removed**)

Job Descriptions Attachment 1

- a. Livestock
- b. Companion Animals
- c. Additional Responsibilities

Personnel Directory Attachment 2

Summary of Responsibilities (Local, State, and Federal Agencies). Attachment 3

Online Resources Attachment 4

Forms (Companion Animals). Attachment 5

- a. TCHS Surrender Agreement
- b. Memo of Understanding for Care and Handling