

Retroviral Basics

FIV Pathophysiology



Virus shed in the saliva of an infected cat



Primarily transmitted via a deep bite wound

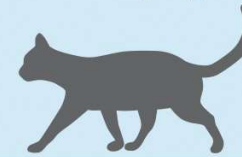
Asymptomatic



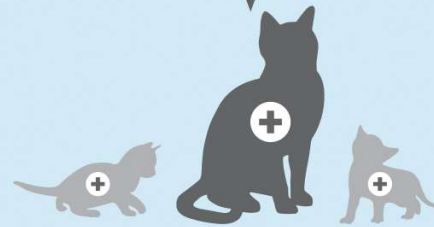
Remains asymptomatic for life

Progression to clinical disease

FeLV Pathophysiology



Virus shed in the saliva and other bodily fluids of an infected cat



Primarily transmitted from queens to kittens (some risk of transmission from prolonged contact or bite wounds)

Abortive infection



Regressive infection

May remain asymptomatic for life

Progressive infection

Can become progressive with inciting cause

Will develop clinical signs

